

# Accessible Changing Room Solutions



The height adjustable full size changing table is one part of a TOTAL solution for public spaces. As a leader in wall mounted and mobile changing tables, ProCare also offers complete restroom solutions that provide comfort, safety, and dignity for users and caregivers.



**ProTOTAL** Room Solutions now available

Designed and suitable for:

**Schools**

**Public Venues**

From a changing table or ceiling lift to a completely accessible room, contact ProCare today for your next project and product need.

**Available  
Nationally in  
USA**

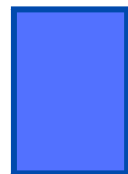
Phone: 855.528.0421

# ACCESSIBLE CHANGING ROOM

## SAMPLE ROOM LAYOUT

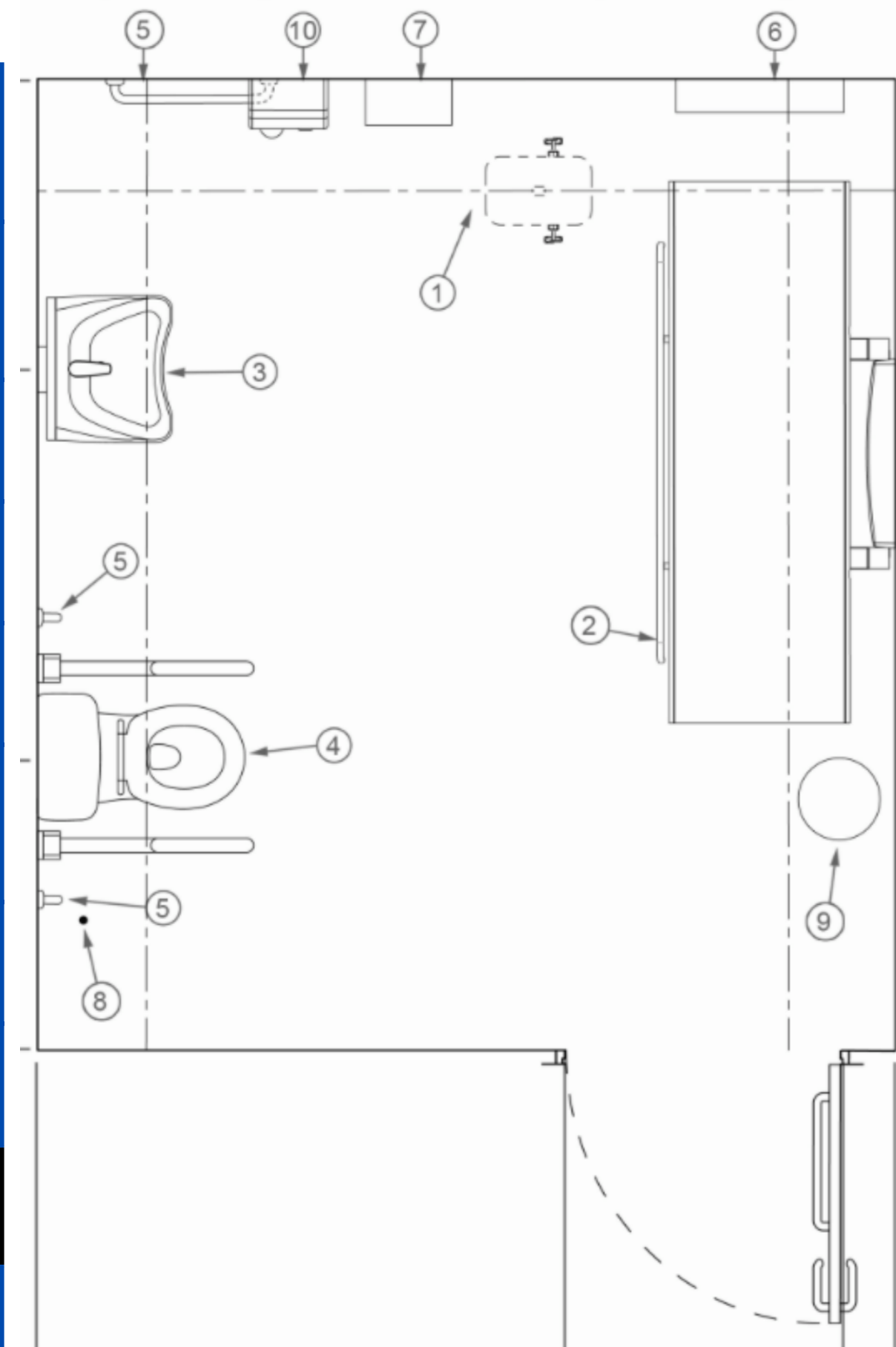
An Accessible Changing Room provides the needed facilities for children or adults that require more than an ADA accessible toilet for personal hygiene. These can be in tourist areas, health facilities, educational buildings, leisure facilities, and transportation hubs.

- Accessible Changing Room is in addition to ADA accessible toilet.
- Layout is minimum 85 square feet.
- Includes standard wheelchair accessible toilet equipment PLUS an overhead ceiling lift, height-adjustable adult sized changing bench, privacy screen, grab rails, paper roll, non-slip floor.



Don't need all items?  
Denotes BASIC package of specialized equipment

<b>1</b>	Ceiling Lift System, C450 Series
<b>2</b>	Vario Changing Table, Full Size Adjustable
<b>3</b>	Height Adjustable Sink
<b>4</b>	Toilet with Fold Down Support Arms
<b>5</b>	Grab Bars, Wall Mounted
<b>6</b>	Wide Paper Dispenser for Changing Table
<b>7</b>	Paper Towel Dispenser
<b>8</b>	Placards and Instructions
<b>9</b>	Waste Can
<b>10</b>	Hand Dryer



These commercial grade solutions are designed to hold up to the rigors of public use — vandal and tamper resistant, easy to clean and use.



# PRODUCT DETAILS

1. The C Series ceiling lift is mounted overhead or with wall supports, to provide the lift needed to the toilet or changing tables. Battery operated and easy to use to transfer up to 450 lbs, and accepts any loop sling.
2. VARIO changing table is available in common lengths of 70" or 74". The full size electric adjustable unit folds up for space saving design, and holds 485 lbs.
3. QUICK WASH (manual) or STANDARDLINE (electric) height adjustable sinks will accommodate virtually any standing or wheelchair user for hand washing.
4. A toilet placed with access on either side for a caregiver, and toilet support arms that will assist with self transfer from either side when needed, and fold up.
5. Wall mounted grab bars can be utilized as needed.
6. Wide paper on dispenser unit for the changing table surface.
7. Paper towels, hand or motion activated.
8. The instruction and guidance placards assist users with important information about the use of the equipment in the room.
9. Waste and trash can.
10. Hand dryer for hygienic air drying of hands, touchless.



**Contact Us**  
**Phone: 855.528.0421**

