



Creating balance in healthcare



Elexo Shower-toilet chair



5100 5500

Elexo Shower-toilet chair



5100 5500

Elexo Shower-toilet chair with removable footrests

Caring for clients with traditional shower-toilet chairs is heavy work. The caregiver is obliged to work in unnatural postures and suffer from static back strain. Lopital offers relief with the height-adjustable Elexo shower-toilet chair.

The Elexo provides comfort and security for both carers and clients. Its flexible height reduces back strain suffered by carers to a minimum, which allows the Elexo to make an important contribution to the healthcare sector health and safety policy.

The electric height-adjustability ensures that the seat reaches a maximum tilting angle of 20 degrees when at its maximum height, thereby creating the optimum seating balance for the client.

- Maximum load 180 kg / 400 lbs.
- Tilt setting from 0 to 20 degrees.
- Simple electric high / low adjustment.
- Handcontrol with battery indicator.
- With sleep mode setting after 60 minutes.
- Upholstered seat with toilet opening and inlay.
- Foldable upholstered armrests with front locking.
- Ergonomically formed seat and backrest.
- Foldable and removable footrests with calf protection.
- Rail for toilet bucket or bedpan.
- 4 plastic castors, fitted with brakes.
- Extremely stable due to the fitting of 2 lifting motors.

Options

- Product no. 6830 5650 Straight armrests.
- Product no. 6840 5661 Dual locking armrests.
- Product no. 6840 5500 Adjustable head / neck support.
- Product no. 6950 1104 Plastic bedpan and lid.
- Product no. 6950 1120 Safety belt.
- Product no. 6950 5624 Platilon backrest.
- Product no. 6950 5625 Platilon seat.
- Product no. 6960 8026 Adjustable comfort leg supports.
- Product no. 6975 8045 Four point safety belt.
- Product no. 7556 0025 Directional wheel left front.





Suitable for people with a mild to severe disability



Ergonomically formed seat with inlay.



Option: Product no. 6960 8026
Adjustable comfort leg supports.



Option: Product no. 6950 1104
Plastic bedpan and lid.



Independent, foldable upholstered armrests with front lock.



Hand control with battery indicator.



Charging point with magnetic coupling.



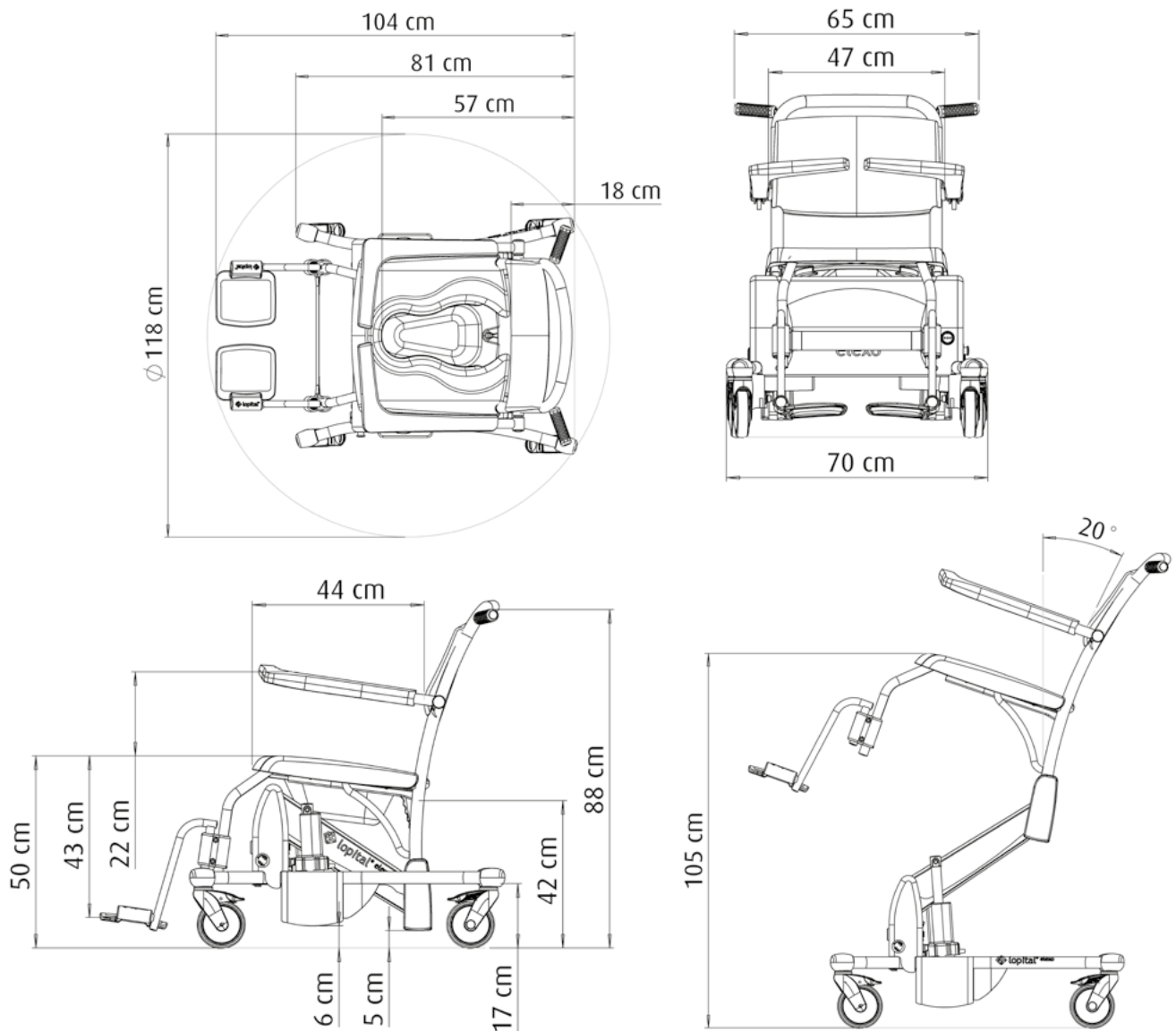
Seat height in lowest position 50 cm.



Tilt setting to 20 degrees.

Technical specifications

- Max. load 180 kg / 400 lbs
- Product weight 47 kg / 103.6 lbs
- Seat width 47 cm / 18.5 inch
- Seat depth 44 cm / 17.3 inch
- Seat height (adjustable) 50 to 105 cm / 19.7 to 41.3 inch
- Tilt setting 0 to 20 degrees
- Total length base frame 104 cm / 40.9 inch
- Total width base frame 70 cm / 27.6 inch
- Turning radius 118 cm / 46.5
- Electrical power 24V
- Battery capacity 7Ah
- Charger 220V 50/60Hz 500mA
- Waterproofness IPX4



759 Flory Mill Road, Lancaster PA 17601
 Toll Free: 855-528-0421 | www.ProCare-innovations.com

 **ProCare**
 Innovations
TRANSFORMING CARE. IMPROVING LIFE



All of the aids produced by Lopital fulfil the following norms: MDD 93/42 EEG, NEN-EN-ISO 14971, NEN-EN 12183, ISO 17966, ISO 9001:2015, ISO 13485:2016/C12:2018, NEN-EN 12182, ISO 60601, EN ISO 60601-1-2, EN ISO 60601-1-6, EN ISO 62366, CAN/CSA 60601, ANSI/AAMI ES 60601-1