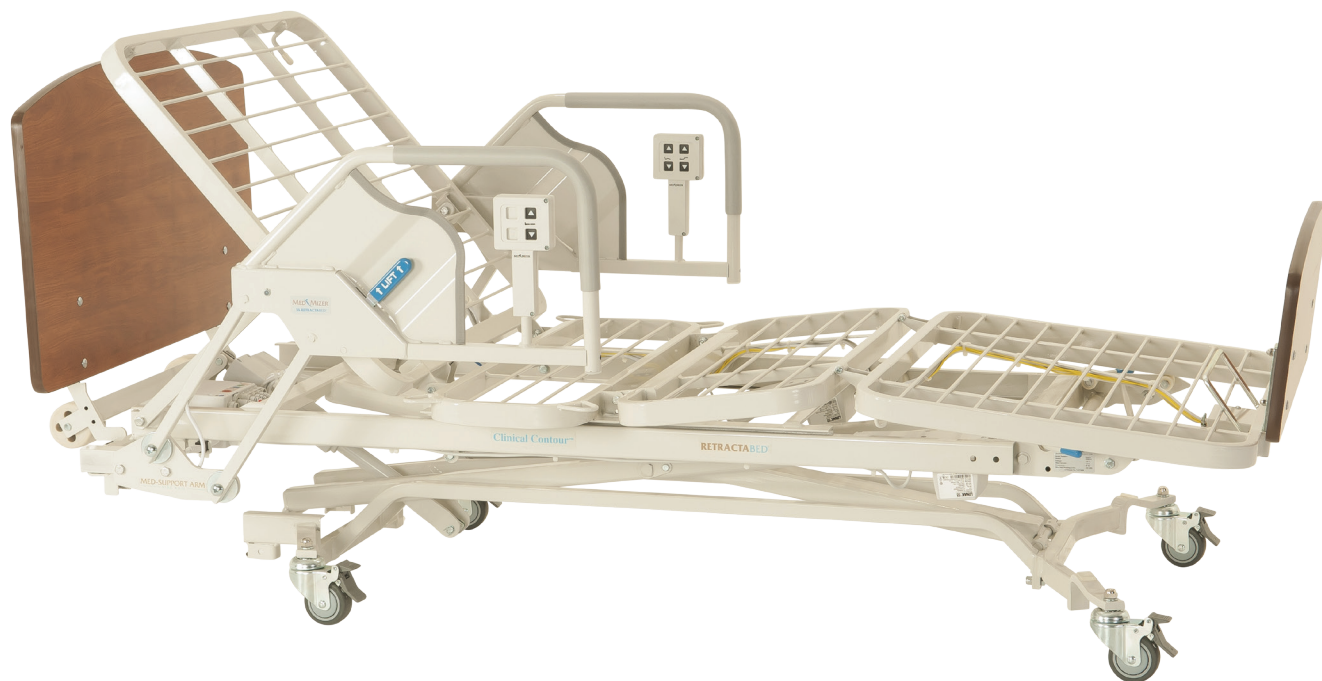


RETRACTABED™ SYSTEM



CC/SS MODELS

- Clinical-Contour® - exclusive feature that reduces skin shear and the repositioning of residents
- Retracting Bed Frame - reduces potential falls and increases staff productivity
- Embedded Controls - fixed controls in assist bar or head rail reduces replacement handsets and increases staff productivity
- Med-Support Arm® - three position head rail used as an assist device or placed in guarded position
- Expandable Width - bed can expand to 39 and 42 inches with no tools
- Functional Lockouts - standard feature to prevent unnecessary operation
- Soft non-marking bumpers come standard to protect wall from damage
- The bed can be vertically transported and for ease of storage or getting through doors
- Each pivot has hardened steel bushings to extend the life of the bed



ProCare Medical
1650 Manheim Pike, Suite 102
Lancaster PA 17601
Ph: 855-528-0421 Fx: 877-528-0421
www.procare-medical.com

ProCare Medical
healthcare solutions ²

RETRACTABED™ SYSTEM

PHYSICAL SPECIFICATIONS

	CC/SS
Deck Height Low.....	9"
Deck Height High	25"
Sleeping Surface.....	35" w x 80" (76")
Length Retracted.....	71"
Length Extended	85"
Maximum Safe Working Capacity	450 lbs
Maximum Back Angle.....	64°
Maximum Knee Angle.....	24°
Mobility Height	any height



Fall Risk
Non-Retractable Bed

Fall Prevention
Retractable Bed

ENVIRONMENTAL SPECIFICATIONS

Operating Temperature.....	41° F to 104° F (5° C to 40° C)
Operating Relative Humidity.....	20% to 90% @ 86° F / 30° C
Operating Atmospheric Pressure.....	700 to 1600 hPa
Storage Temperature.....	-10° C to -50° C
Storage Relative Humidity.....	20% to 90% @ 86° F / 30° C
Storage Atmospheric Pressure.....	700 to 1060 hPa

ELECTRICAL SPECIFICATIONS

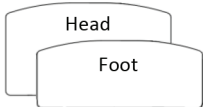
Main Voltage Input.....	120 V AC
Max Current Input.....	2.70 A
Main Frequency Input.....	60 Hz
Controller Output Voltage.....	24 V

LIMITED WARRANTY

15 years on bed frame mechanics
5 years on drive system
1 year on wood, casters & handsets
Lifetime warranty on all welds

Approvals: IEC60601-1:2005 2nd edition, ANSI / AAMI ES60601-1:2005 2nd edition, and CAN / CSA-22.2 No 60601-1:2008

Endboard Options



Standard Board Shapes



ENGLISH OAK



MAHOAGANY



CHERRY



LIGHT OAK

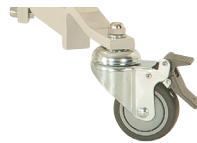
*Custom boards are available



Med Support® Arm Pads



4" Bed Extender



4 Total Lock Casters



Battery Backup



Floor Bumper Guard



42" Bed Width Kit



Pivoting Assit Bars



Pivoting Assit Bars with
Fixed Handset



Trapeze Assembly



Transport Dolly



ProCare Medical

1650 Manheim Pike, Suite 102
Lancaster PA 17601

Ph: 855-528-0421 Fx: 877-528-0421

www.procare-medical.com

ProCare Medical

healthcare solutions ²